



EVERGREEN

AT PRESTIGE RAINTREE PARK
WHITEFIELD | BENGALURU

4 BED
HOMES

AERIAL VIEW



Artist's Impression

MASTER PLAN - EVERGREEN



LEGEND

- | | | |
|----------------------------|----------------------------|--|
| 1. Entry / Exit | 16. Arrival Terrace Garden | 31. The Lagoon |
| 2. Rain Tree Grove Trail | 17. Entry Pavilion | 32. Kids Pool |
| 3. Linear Water Feature | 18. Sculpture Mounds | 33. Water Play |
| 4. Pet Park | 19. The Lookout Point | 34. Water Deck |
| 5. Tennis Court | 20. Garden Pavilion | 35. Sculpture on Lawn |
| 6. Fitness Station | 21. Rain Tree playground | 36. Sculpture Garden |
| 7. Forest Pavilion | 22. Cabana | 37. The Lawn Maze |
| 8. Drop Off | 23. Sunken Deck | 38. Terrace Garden |
| 9. Pickleball Court | 24. Water Courtyard | 39. Rain Tree Plaza |
| 10. Cricket Practice Pitch | 25. Clubhouse Terrace | 40. Falling Water |
| 11. Padel Court | 26. Central Lawn | 41. Infinity Lap Pool |
| 12. Services | 27. Ramp | 42. Pool-side Sun Deck |
| 13. Visitors Parking | 28. Lagoon Pavilion | 43. Tranquility Steps |
| 14. Basketball Court | 29. Relaxation Pool | 44. Water Lily Garden |
| 15. Dense Forest | 30. Sun Deck | 45. Rain Tree Pavilion (Dry F & B Provision) |



MASTER NUMBERING PLAN



LEGEND	UNIT MATRIX	AREA IN SFT
	TYPE -A	1BHK 659
	TYPE -B1a	1BHK 939
	TYPE -B2a	1BHK 971
	TYPE -B3a	1BHK 976
	TYPE -B1	2B2T 1177
	TYPE -B2	2B2T 1174
	TYPE -B3	2B2T 1194
	TYPE -C2a	2B2T 1222
	TYPE -D6a	2B2T 1526
	TYPE -E3a	2B2T 1504
	TYPE -C1	3B2T 1461
	TYPE -C2	3B2T 1486
	TYPE -D1	3B3T 1647

LEGEND	UNIT MATRIX	AREA IN SFT
	TYPE -D2	3B3T 1666
	TYPE -D3	3B3T 1763
	TYPE -D4	3B3T 1764
	TYPE -D5	3B3T 1767
	TYPE -D6	3B3T 1782
	TYPE -D7	3B3T 1778
	TYPE -D8	3B3T 1759
	TYPE -D9	3B3T 1825
	TYPE -E1	3B3T (Large) 1884
	TYPE -E2	3B3T (Large) 1919
	TYPE -E3	3B3T (Large) 1943
	TYPE -E3b	3B3T (Large) 1943
	TYPE -E4	3B3T (Large) 1951

LEGEND	UNIT MATRIX	AREA IN SFT
	TYPE -F1	3B+STUDY 1991
	TYPE -F2	3B+STUDY 2001
	TYPE -F3	3B+STUDY 2037
	TYPE -G1	4B+3T+M 2271
	TYPE -G2	4B+3T+M 2299
	TYPE -H1	4B+4T+M 2492
	TYPE -H2	4B+4T+M 2495
	TYPE -H3	4B+4T+M 2508
	TYPE -H4	4B+4T+M 2508
	TYPE -H5	4B+4T+M 2513
	TYPE -H6	4B+4T+M 2510
	TYPE -H7	4B+4T+M 2513

UNIT TYPE - H7 [4B + 4T + MAID]

4BHK [2513 sqft - 2271 sqft]

4B + 4T + Maid | 4B + 3T + Maid



Key plan N
1 TO 19 Levels

UNIT TYPE - H7	SFT	SQM
Saleable Area	2513	233.47
Carpet Area	1559	144.87
Balcony/Utility	208.61	19.38
Building - 03	Tower - 07	
Level	1 st TO 19 th	

UNIT TYPE - H6 [4B + 4T + MAID]



Key plan N
 ■ G TO 19 Levels
 ■ 2 TO 19 Levels

UNIT TYPE - H6	SFT	SQM
Saleable Area	2510	233.17
Carpet Area	1561	145.06
Balcony/Utility	209.14	19.43
Building - 05, 06	Tower - 10, 12	
Level	G nd TO 19 th	

UNIT TYPE - H5 [4B + 4T + MAID]



Key plan N
 ■ G TO 19 Levels

UNIT TYPE - H5	SFT	SQM
Saleable Area	2513	233.42
Carpet Area	1558	144.77
Balcony/Utility	211.08	19.61
Building - 05	Tower - 10	
Level	G nd TO 19 th	

UNIT TYPE - H4 [4B + 4T + MAID]

UNIT TYPE - H3 [4B + 4T + MAID]



Key plan N ↑
 ■ G TO 19 Levels

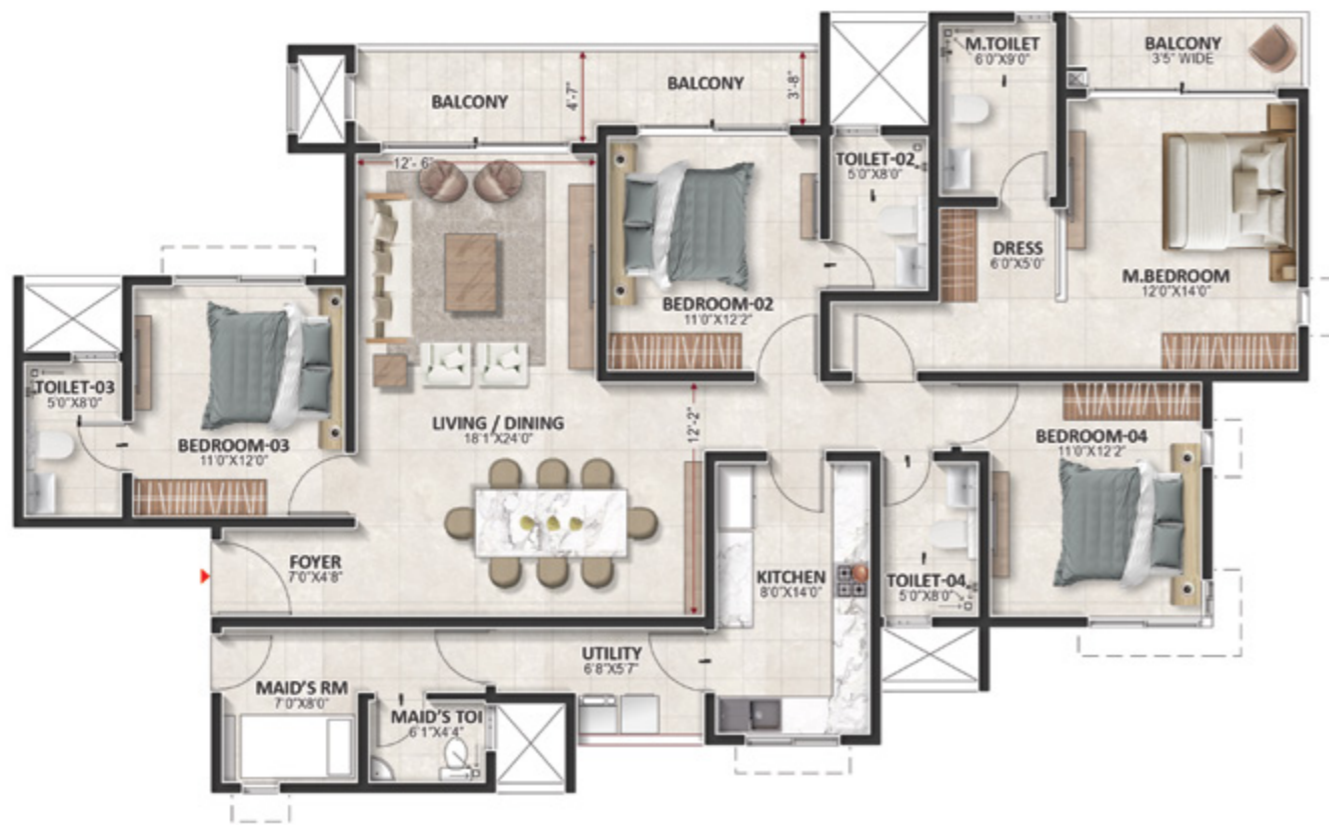
UNIT TYPE - H4	SFT	SQM
Saleable Area	2508	232.95
Carpet Area	1593	147.96
Balcony/Utility	187.29	17.40
Building - 05	Tower - 10	
Level	G nd TO 19 th	



Key plan N ↑
 ■ G TO 19 Levels
 ■ 1 TO 19 Levels

UNIT TYPE - H3	SFT	SQM
Saleable Area	2508	233.03
Carpet Area	1559	144.81
Balcony/Utility	212.37	19.73
Building - 01 & 05	Tower - 01, 02, 10	
Level	G nd TO 19 th	

UNIT TYPE - H2 [4B + 4T + MAID]



Key plan N ↑

■ G TO 19 Levels

UNIT TYPE - H2	SFT	SQM
Saleable Area	2495	231.76
Carpet Area	1580	146.79
Balcony/Utility	190.74	17.12
Building - 05	Tower - 10	
Level	G nd TO 19 th	

UNIT TYPE - H1 [4B + 4T + MAID]



Key plan N ↑

■ G TO 19 Levels

UNIT TYPE - H1	SFT	SQM
Saleable Area	2492	231.49
Carpet Area	1571	145.96
Balcony/Utility	193.75	18.00
Building - 06	Tower - 11	
Level	G nd TO 19 th	

UNIT TYPE - G2 [4B + 3T + MAID]



Key plan N ↑
 ■ G TO 19 Levels
 ■ 1 TO 19 Levels

UNIT TYPE - G2	SFT	SQM
Saleable Area	2299	213.61
Carpet Area	1464	135.99
Balcony/Utility	161.14	14.97
Building - 02, 04, 06 & 07	Tower - 04, 08, 12, 14	
Level	G nd TO 19 th	

UNIT TYPE - G1 [4B + 3T + MAID]



Key plan N ↑
 ■ G TO 19 Levels

UNIT TYPE - G1	SFT	SQM
Saleable Area	2271	210.94
Carpet Area	1458	135.43
Balcony/Utility	151.45	14.07
Building - 01	Tower - 01, 03	
Level	G nd TO 19 th	



- HOMES • OFFICES • SHOPPING MALLS •
- HOTELS • INTERIORS • WAREHOUSING •

Bengaluru | Chennai | Goa | Hyderabad | Kerala | Mangaluru | Delhi-NCR
Mumbai | Ahmedabad | Dubai Sales Office

PRESTIGE ESTATES PROJECTS LIMITED

Prestige Falcon Towers, No.19, Brunton Road, Bengaluru - 560025, Karnataka, INDIA.
Ph: +91-80-25591080. E-mail: properties@prestigeconstructions.com. www.prestigeconstructions.com

International Sales Office: dubai@prestigeconstructions.com

PRESTIGE EVERGREEN @ PRESTIGE RAINTREE PARK

SH 35, Whitefield Main Road, Varthur, Bengaluru, Karnataka 560087

This brochure is conceptual and has been prepared based on the inputs provided by the Project Architect. This may vary during execution. The Promoter reserves the right to change, alter, add or delete any of the specifications mentioned herein based on site conditions and construction exigencies without prior permission or notice. The external color schemes and detailing of landscape may vary as may be suggested by the Architect considering the site conditions.

The furniture shown in the plans is only for the purpose of illustrating a possible layout and does not form a part of the offering or specifications. All Apartment interior views do not depict the standard wall, color & ceiling finishes and are not part of the offering.

Further, the dimensions mentioned do not consider the plastering thickness and there could be marginal variation in carpet areas.

